



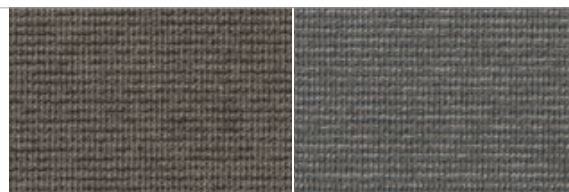
Verso 2038



## Specification according to EN 1307

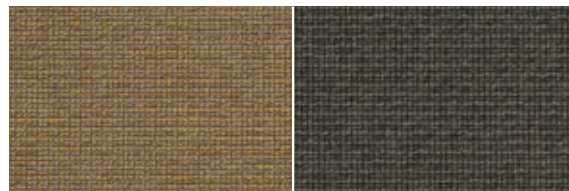
Type of manufacture	Tufted 1/10" Compactuft loop pile	ISO 2424
Pile fibre composition	Solution dyed BCF Polyamide 6.6	ISO 2424
Dimensions	50 x 50 cm / 19.68" x 19.68"	EN 994
	(20 tiles per box)	
Primary backing	Polyester fleece	ISO 2424
Secondary backing	DESSO ProBase® or DESSO EcoBase®* Polyver® - Polyscan®	ISO 2424
Total thickness	5.5 mm      0.2 inch	ISO 1765
Effective pile thickness	1.0 mm      0.04 inch	ISO 1766
Total mass	4100 g/m <sup>2</sup> 121.0 oz/yd <sup>2</sup>	ISO 8543
Total pile mass	500 g/m <sup>2</sup> 14.8 oz/yd <sup>2</sup>	ISO 2424
Effective pile mass	185 g/m <sup>2</sup> 5.5 oz/yd <sup>2</sup>	ISO 8543
Pile density	0.185 g/cm <sup>3</sup> 0.0067 lb/in <sup>3</sup>	ISO 8543
Number of tufts	1380/dm <sup>2</sup> 115382/yd <sup>2</sup>	ISO 1763
Stroll test	≤ 2.0 kV	ISO 6356
Vertical resistance	≤ 1 x 10 <sup>9</sup> Ohm	ISO 10965
Use classification	33 Commercial - heavy use	EN 1307
Dimensional stability	≤ 0.2 %	EN 986
Impact sound reduction ΔL <sub>w</sub>	20 dB	ISO 140-8
Noise reduction	0.15 α <sub>w</sub>	ISO 354
Flammability	C <sub>fi</sub> - s1 (loose laid tested)	EN 13501-1
Light Reflectance Value (LRV)	See right side page per colour	BS 8493
Colour depth (L)	See right side page per colour	CIELAB

\* DESSO EcoBase® is a polyolefin based backing.



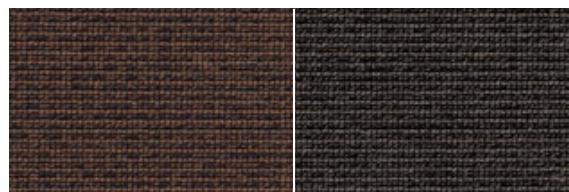
**9094**  
L 43,89 / LRV 13,76

**9965**  
L 45,54 / LRV 14,93



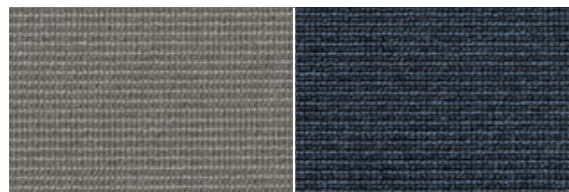
**2038**  
L 49,57 / LRV 18,06

**2912**  
L 33,94 / LRV 7,98



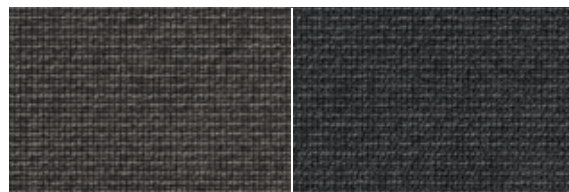
**2051**  
L 29,65 / LRV 6,10

**9093**  
L 31,27 / LRV 6,77



**9945**  
L 52,00 / LRV 20,15

**3922**  
L 36,92 / LRV 9,49



**9975**  
L 35,14 / LRV 8,57

**9501**  
L 28,00 / LRV 5,46



**9111**  
L 22,67 / LRV 3,70

**9532**  
L 28,04 / LRV 5,47



**CE**      Manufactured by

EN 14041      Desso BV  
0493-CPR-0002      PO Box 169  
   NL-5240 AD  
   Waalwijk